

## 3 Disassembly and Reassembly

This section of the service manual describes the disassembly and reassembly procedures for the AN17JS/AN17JT monitor.

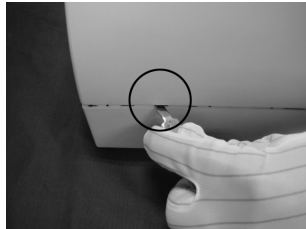
**WARNING:** This monitor contains electrostatically sensitive devices. Use with caution when handling these components.

### 3-1 Disassembly

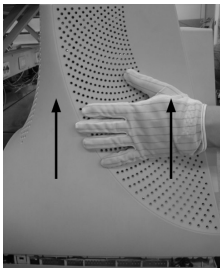
Cautions: 1. Disconnect the monitor from the power source before disassembly.

2. To remove the Rear Cover, you must use the special opening jig tool.

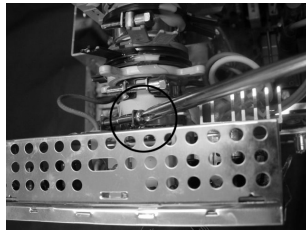
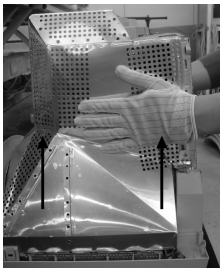
3. R/Cover opening jig : BH81-00001A



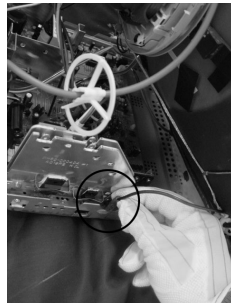
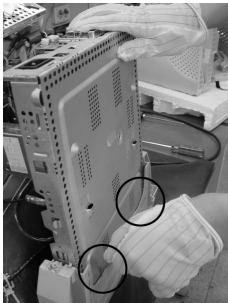
1. Release the snaps on the rear stand and pull the stand backwards from the monitor. Insert the opening jig into the grooves at each side and press until it clicks.



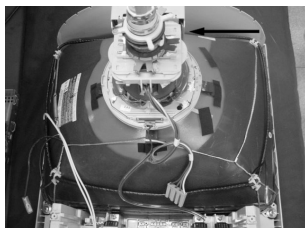
2. When the snaps on the rear cover released, lift up the rear cover and set aside. Remove 3 screws from the rear top shield.



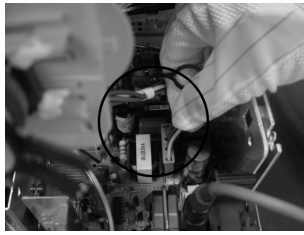
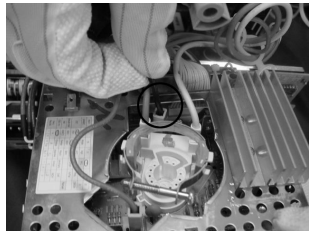
3. Lift up the top shield, then release the 1 screw to remove the CRT from the CRT socketboard.



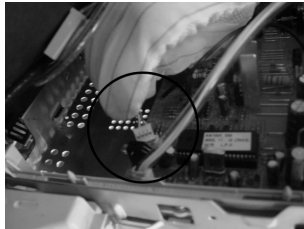
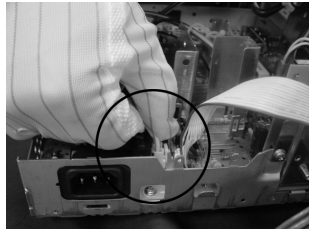
4. Using the jig, release the snaps connecting the front cover and the PCB. Lift up the bottom to separate the two shields and the CRT ground wire at two points as shown.



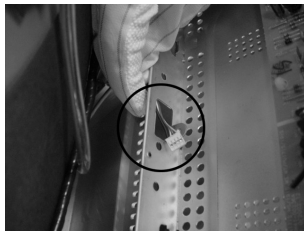
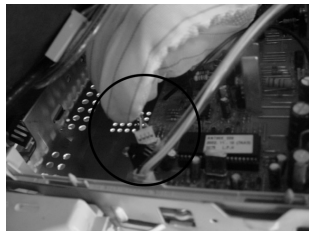
5. Remove the high voltage cap from the CRT.  
⚠ CAUTION : High voltage may be present.



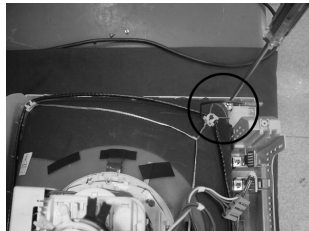
6. Remove the CRT ground wire connector from CRT socket. Next, remove the CRT DY connector from the main board.



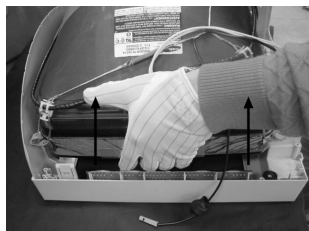
7. Remove the degaussing wire connector and tilt wire connector from the main board.



8. Disconnect the function board connector. Then separate the connector from the main board shield by passing it through the hole of main board shield.



9. Remove the 4 screws at CRT corners. Lift up the CRT from the monitor front.



10. Remove CRT from the front cover.

## 3-2 Reassembly

---

Reassembly procedures are in the reverse order of disassembly procedures.