
3 Alignments and Adjustments

This section of the service manual explains how to use the RS232 JIG.
This function is needed for AD board change.

3-1 Required Equipment

The following equipment is necessary for adjusting the monitor:

- Computer with Windows 95, Windows 98, Windows NT, Windows 2000, or Windows XP.
- MTI-2031 DDC MANAGER JIG

3-2 Automatic Color Adjustment

To Analog video, In 16gray or any pattern using black and white and any mode.(16gray and XGA mode recommend)

1. Push the OSD Menu button to open the OSD
2. Select language English
3. Push enter button during 5 seconds.
4. See the screen flashing

3-3 DDC EDID Data Input

1. Input DDC EDID data when replacing AD PCB.
2. Receive/Download the proper DDC file for the model from HQ quality control department.
Install the below jig (Figure 1) and enter the data.

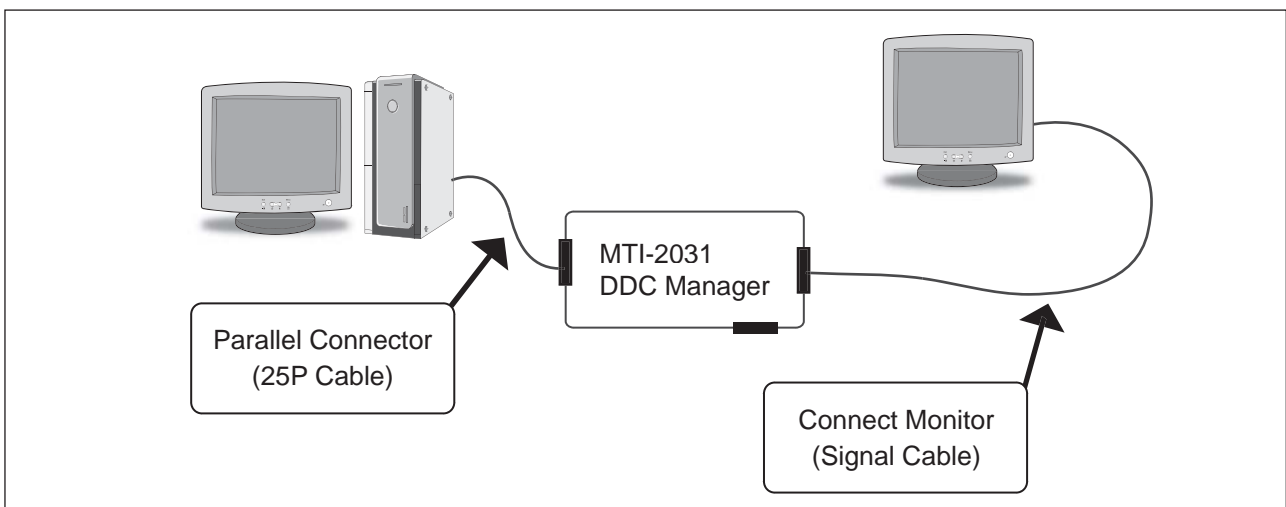


Figure 1.

3-4 Service Function Spec.

3-4-1 How to Display Service Function OSD

1. After setting both brightness and contrast to '0' push the 'enter' button more than 5 seconds.
2. service function appear as below.

Service Function			
Monitor On Time:		42Hr	
Panel Cycle :		13	
		Time	Ch. No
Panel:	:	42Hr	165
Lower Lamp:		42Hr	165
Upper Lamp:		42Hr	165
Version : TM-Haydn20WW-0714			
Checksum :			

Figure 2.

3-4-2 How to Control Service Function OSD

1. Monitor On Time : Power on time
2. Panel Cycle : Panel on/off time(Power off, mode change, DPMS on/off..)
3. Panel : Panel on time
(Each time the panel is replaced press the menu key for 5 seconds to add to the Ch. No. indicating the number of time the panel has been changed.)
4. Upper lamp : Upper lamp on time
(When the upper lamp is replaced press menu to add to the Ch. No. which shows the number of times the lamp has been replaced.)
5. Lower lamp : lower lamp on time
(When the upper lamp is replaced press menu to add to the Ch. No. which shows the number of times the lamp has been replaced.)
6. Auto auto : If Auto auto menu set to on, when the mode is changed for the first time, Auto adjust function is performed. Default is on
7. Pixel Shift : Not used
8. Country : OSD language can be changed with this menu to World wide, Korean, China, or Japanese.

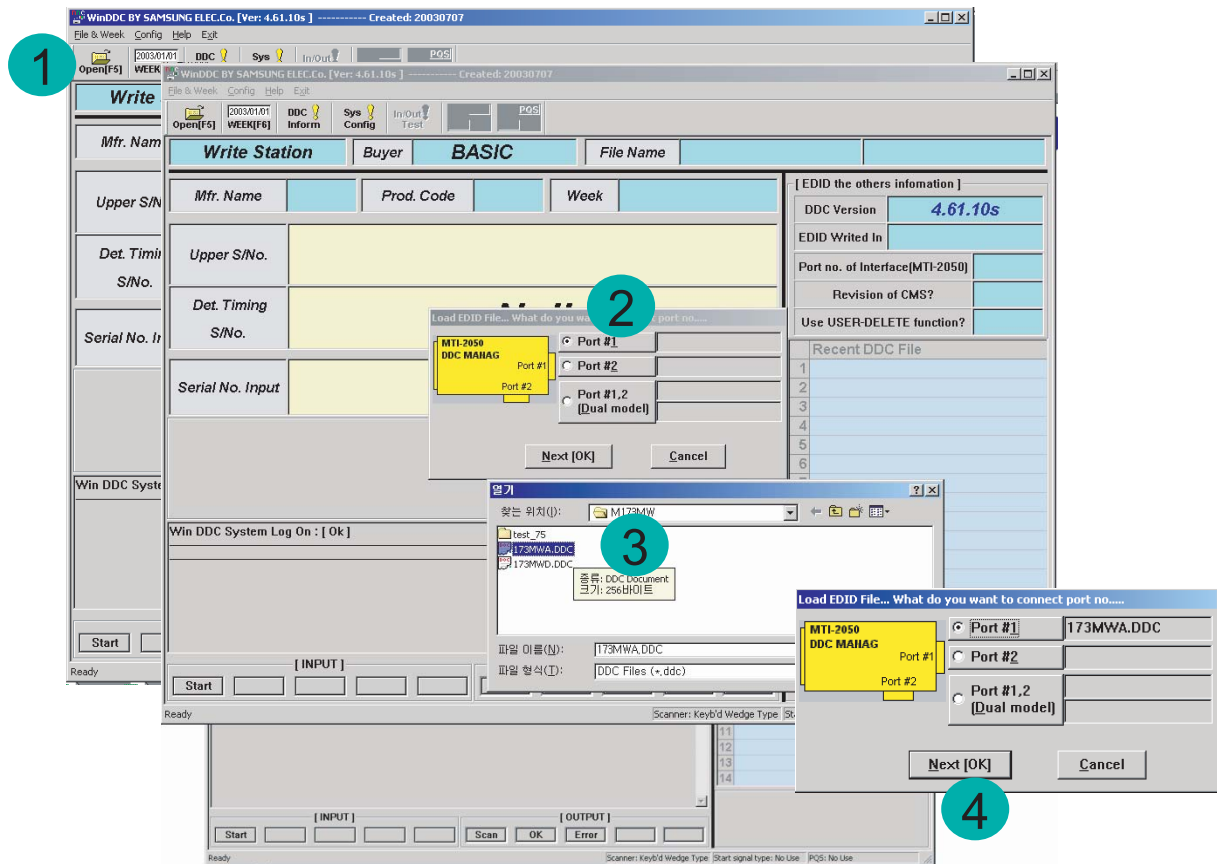
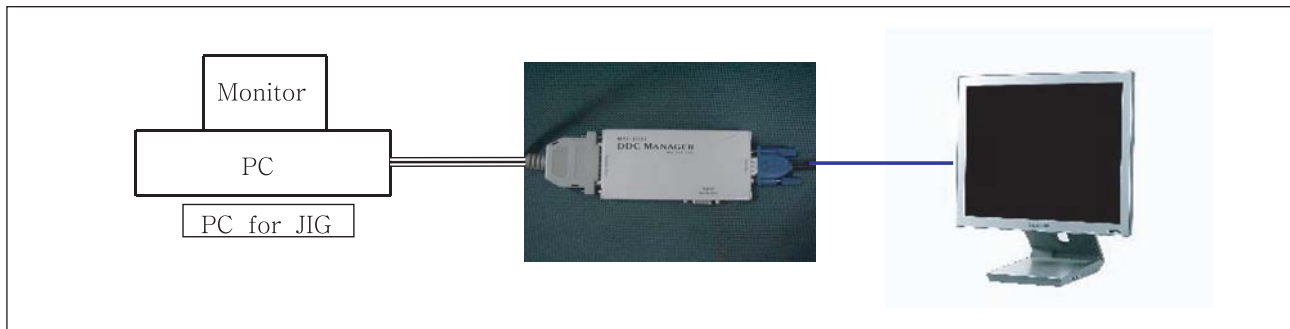
You can navigate the menu with "+"key, and adjust with "menu key" pressing 5 seconds(Panel, Upper Lamp, and Lower Lamp memu). You can also control Auto auto, Pixel Shift, and country menu with pressing "-"key.

3-5 Hidden Key list

No	Function	Action method
1.	Hidden Service Function	<ul style="list-style-type: none"> - After setting brightness and contrast '0' push the "Enter" button more than 5 seconds. - Service Function appear.
2.	Factory Reset	<ul style="list-style-type: none"> - While Menu is opened(any menu), press "enter" key over 5 seconds. - Screen is flashing, then all menus return to the factory default.
3.	Auto calibration	<p>To Analog video, In 16gray or any pattern using black and white and any mode.(16gray and XGA mode recommend)</p> <ol style="list-style-type: none"> 1. Push the OSD Menu button to open the OSD. 2. Select language English. 3. Push enter button during 5 seconds. 4. Screen is flashed and auto calibration is completed.
4.	OSD lock	<ul style="list-style-type: none"> - Press the menu key over 5 seconds, then OSD is locked . - To unlocked the OSD, press the memu key over 5 seconds.

3-6 DDC Input Method(Windows Program)

After change a Main Board ,DDC input shpuld be done via DDC control JIG.
Connecting method is refer to below picture.



1. Winddc.exe Program install in PC

2. Cilck the Winddc icon.

3. File open.

4. Select Port#1

Load DDC fileFile Name

- "SM205BWA.ddc"

- "SM205BWD.ddc"

Click Next(OK) button.

WinDDC BY SAMSUNG ELEC.Co. [Ver: 4.61.10s] ----- Created: 20030707

File & Week Config Help Exit

Open[F5] WEEK[F6] DDC Inform Sys Config In/Out Test PQS

Write Station Buyer SAMSUNG File Name SM930BA

Mfr. Name SAM Prod. Code CB00 Week 47th of 2003

Upper S/No.

Det. Timing S/No. H1AK500000

Serial No. Input H1AK500000 Check Sum 0x6D

Win DDC System Log On : [Ok]

[Load File] The Analog File: 173MWA.DDC
[Week Input] 47th of 2003 [11/19]

[INPUT] [OUTPUT]

Start Scan OK Error

Ready Scanner: Keyb'd Wedge Type Start signal type: No Use PQS: No Use

[EDID the others information]

DDC Version 4.61.10s

EDID Writed In EEPROM

Port no. of Interface[MTI-2050] #1

Revision of CMS? No CMS

Use USER-DELETE function? No

Recent DDC File

1	#1: 173MWA.DDC.#2
2	
3	
4	
5	
6	
7	
8	
9	
10	
11	
12	
13	
14	

5: Input a monitor serial number and push the enter key.

After Analog input, Please do # 2 ~ 5 when digital input.

3-7 Execution Items after replacing the main board

After Replacing the Maing Board

1. Auto Calibration
2. EDID installation(Analog and Digital)
3. Factory Reset

Memo