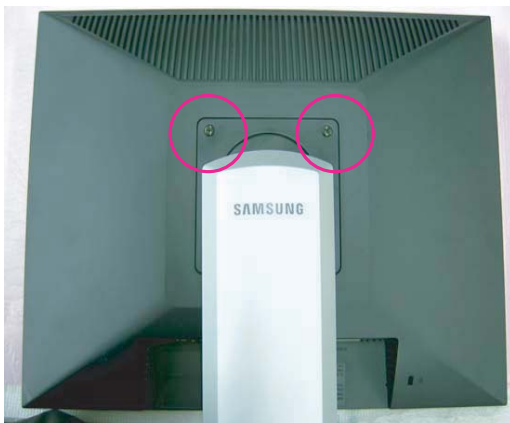

11 Disassembly and Reassembly

This section of the service manual describes the disassembly and reassembly procedures for the LHA20WS TFT-LCD monitors.

⚠ WARNING: This monitor contains electrostatically sensitive devices. Use caution when handling these components.

11-1 Disassembly

- ⚠ Cautions:**
1. Disassembly stand on the flat desk.
 2. Disconnect the monitor from the power source before disassembly.



1. Separate the screw. (2 point)

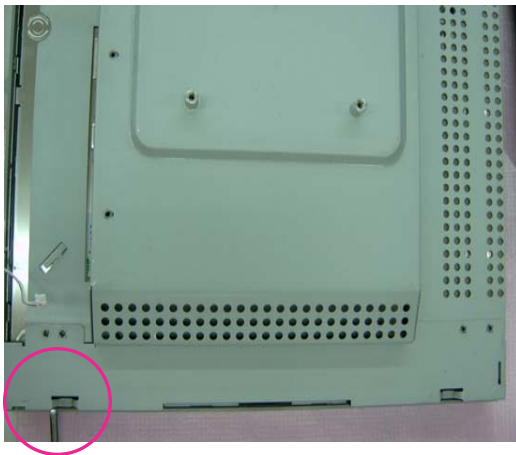


2. Use the Jig and Separate Cover Rear.

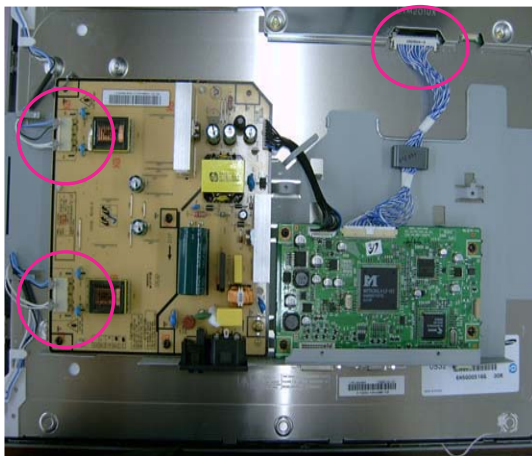
11 Disassembly and Reassembly



3. Separate cable Main Board and Separate screw between Shield PCB and Bracket PCB.(2 point)



4. Separate screw Between Shield PCB and Panel. (4 point)



5. Separate harness of the Panel with the IP Board with the Main Board.

11-2 Reassembly

Reassembly procedures are in the reverse order of disassembly procedures.