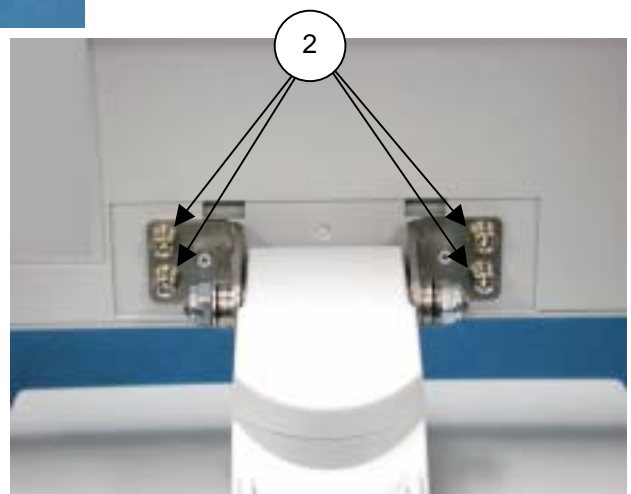
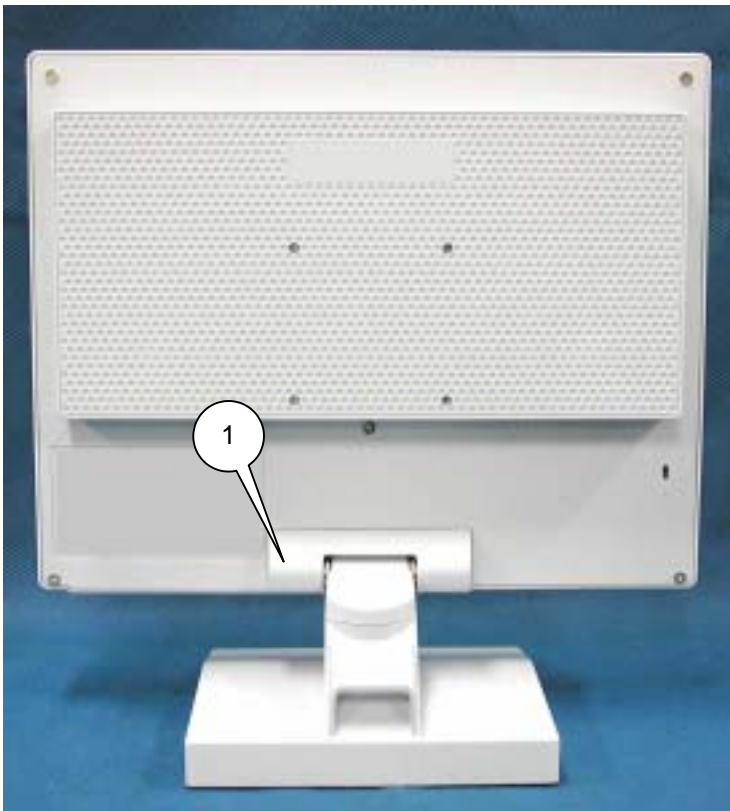


DISASSEMBLY

- Before you disassemble the set, turn off power and pull out the power plug.
- Use the proper screwdriver. If oversize or undersize screwdriver is used, screws may be damaged.
- Assembly is the opposite process of disassembly.

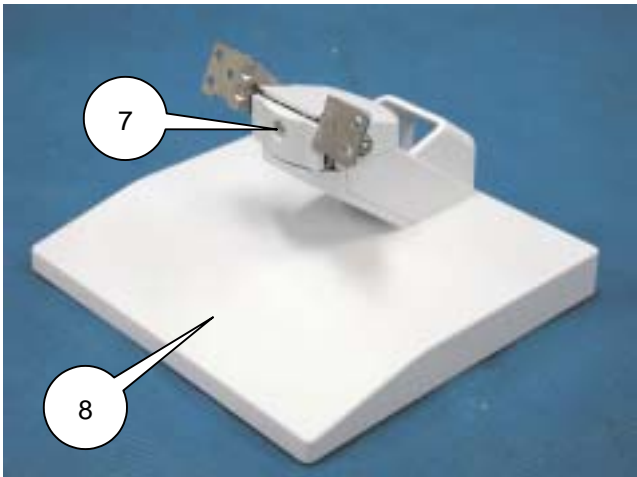
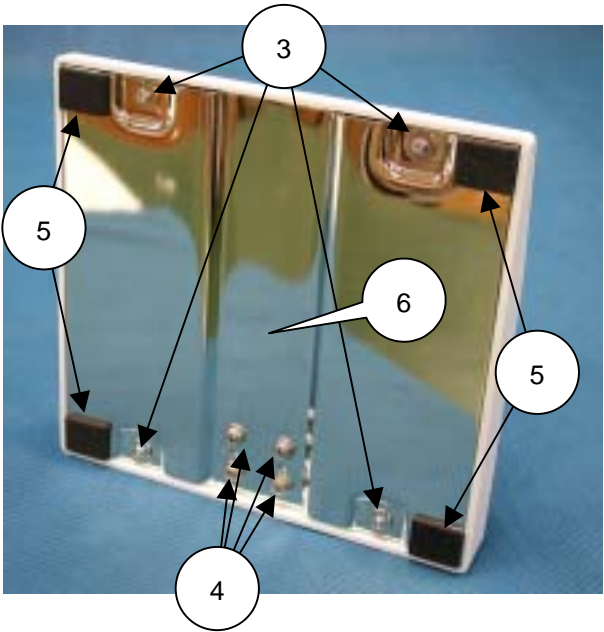
A Version Only

SYMBOL	CODE(NPG)	CODE(NMV)	DESCRIPTION	CABINET COLOR
1	11001261	79PQ5099	COVER CABLE	White
1	11001671	79PQ5109	COVER CABLE(BK)	Black
2	14300351	---	P4*12+SPN+WAS MC (NI) NLYOK	---



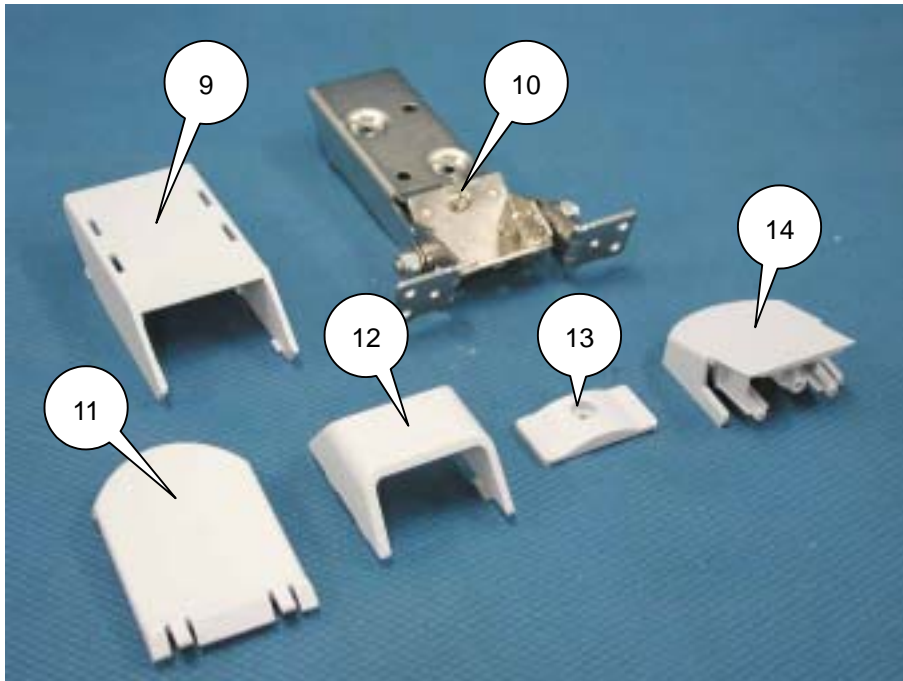
A Version Only

SYMBOL	CODE(NPG)	CODE(NMV)	DESCRIPTION	CABINET COLOR
3	14000241	---	T4X6 ML(NI)	---
4	14300351	---	P4*12+SPN+WAS MC (NI) NLYOK	---
5	17001241	79PQ5165	PAD, FOOT	---
6	12300841	79PQ5164	SHIELD, BASE	---
7	14000181	---	SCREW T3X10	---
8	11001271	79PQ5157	TILE BASE	White
8	11001621	79PQ5158	TILE BASE	Black



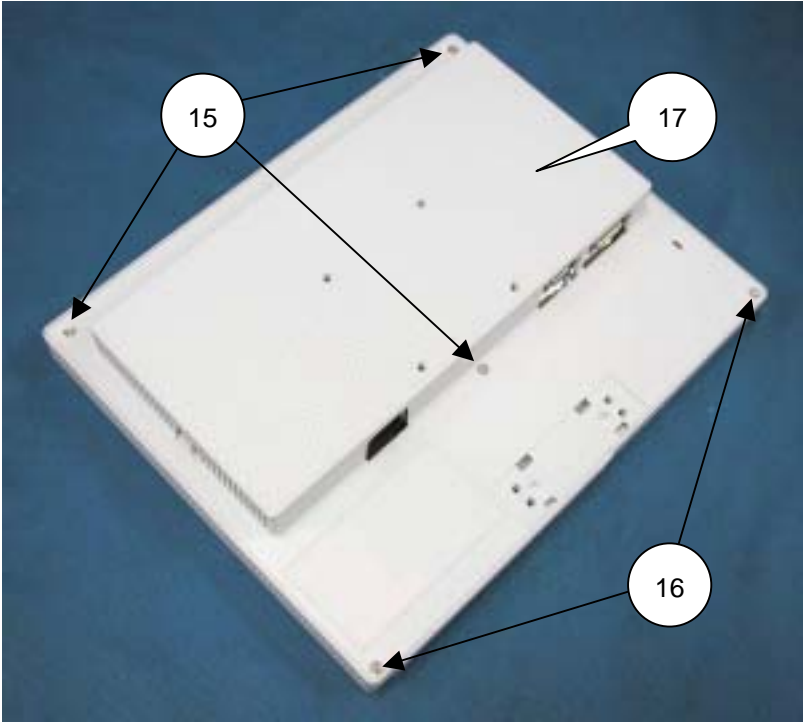
A Version Only

SYMBOL	CODE(NPG)	CODE(NMV)	DESCRIPTION	CABINET COLOR
9	11001241	79PQ5098	COVER STAND RAER	White
9	11001661	79PQ5112	COVER STAND REAR(BK)	Black
10	14900031	---	HINGE, UNIT	---
11	11001251	79PQ5097	COVER STAND FRONT	White
11	11001651	79PQ5111	COVER STAND FRONT(BK)	Black
12	11001261	79PQ5099	COVER CABLE	White
12	11001671	79PQ5109	COVER CABLE(BK)	Black
13	11301481	---	PAD,HINGE	White
13	11301531	---	PAD,HINGE	Black
14	11001221	79PQ5096	COVER HINGE(T)	White
14	11001631	79PQ5110	COVER HINGE(T)(BK)	Black



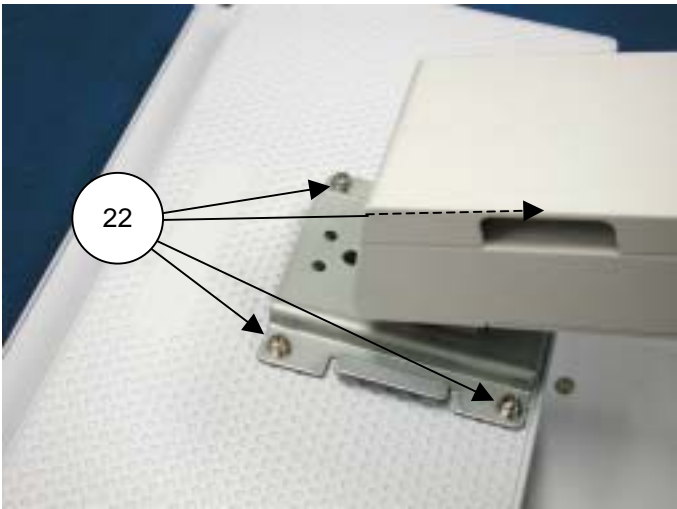
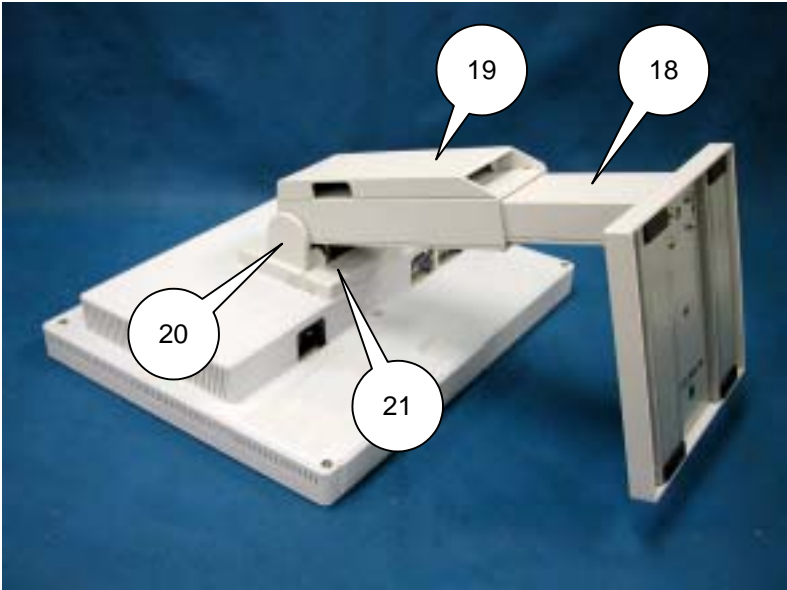
A Version Only

SYMBOL	CODE(NPG)	CODE(NMV)	DESCRIPTION	CABINET COLOR
15	14300271	---	P3X8 MC(NI)	White
15	14300311	---	P3.0*8 MC (ZN)	Black
16	14000231	---	T3*16/W MC (NI)	White
16	14000281	---	T3.0*16 MC (ZN)	Black
17	10103151	79PQ5167	COVER REAR ASSY(LCD1560N)	White
17	10103321	79PQ5173	COVER REAR ASSY(LCD1560NX)	Black



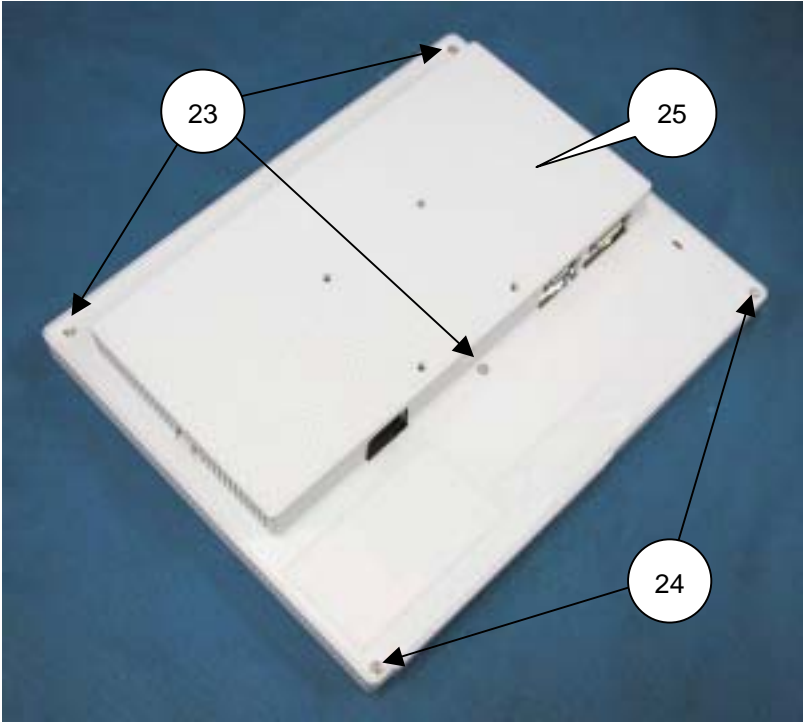
B Version Only

SYMBOL	CODE(NPG)	CODE(NMV)	DESCRIPTION	CABINET COLOR
18	11001471	79PQ5440	STAND-UNIT	White
18	11001511	79PQ5441	STAND-UNIT	Black
19	11001501	79PQ5454	COVER CABLE	White
19	11001541	79PQ5455	COVER CABLE	Black
20	11001481	79PQ5443	VESA COVER UP	White
20	11001521	79PQ5444	VESA COVER UP	Black
21	11001491	79PQ5442	VESA COVER UN	White
21	11001531	79PQ5445	VESA COVER UN	Black
22	14300351	---	P4*12+SPN+WAS MC (NI) NLYOK	---



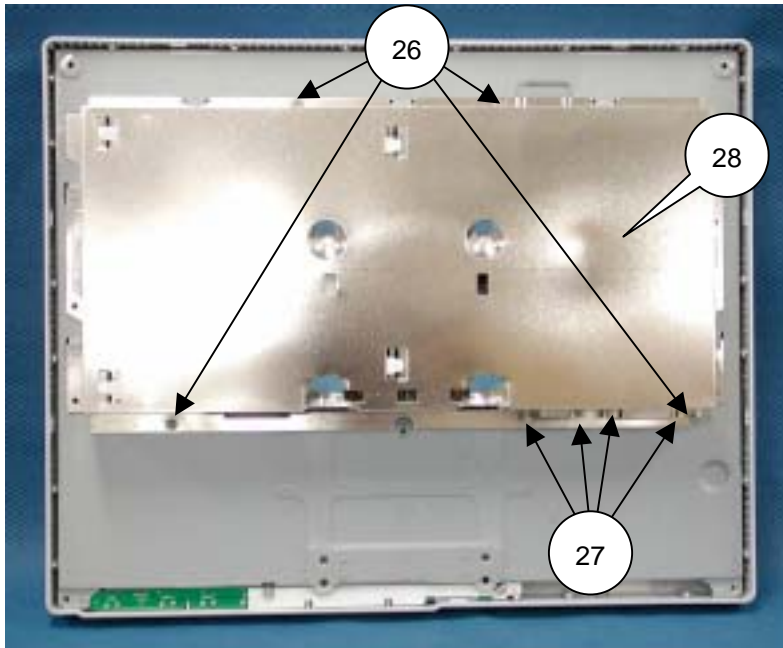
B Version Only

SYMBOL	CODE(NPG)	CODE(NMV)	DESCRIPTION	CABINET COLOR
23	14300271	---	P3X8 MC(NI)	White
23	14300311	---	P3.0*8 MC (ZN)	Black
24	14000231	---	T3*16/W MC (NI)	White
24	14000281	---	T3.0*16 MC (ZN)	Black
25	10103151	79PQ5167	COVER REAR ASSY(LCD1560N)	White
25	10103321	79PQ5173	COVER REAR ASSY(LCD1560NX)	Black

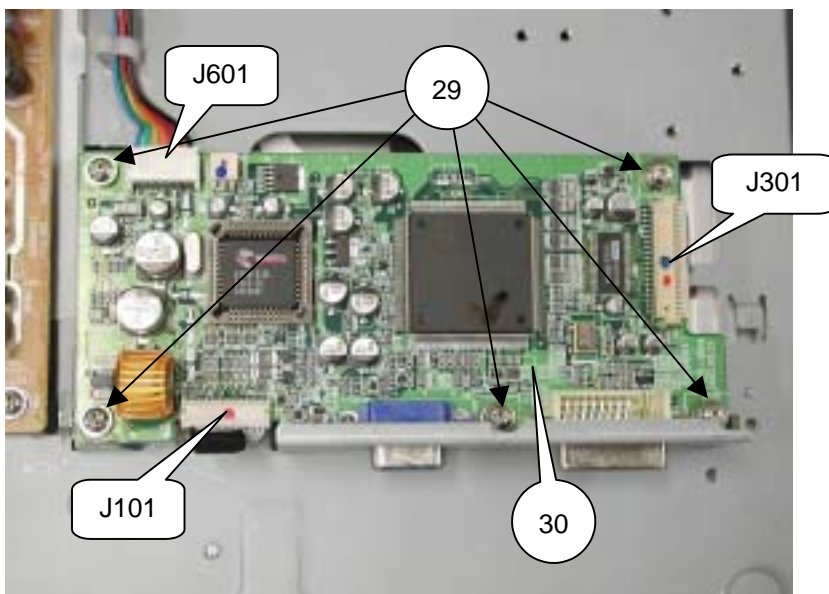


A / B Version

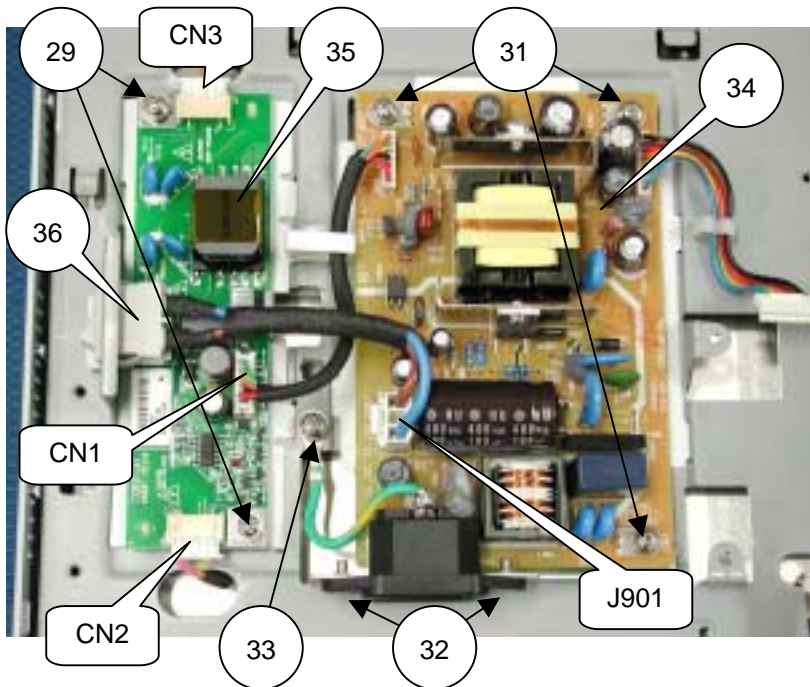
SYMBOL	CODE(NPG)	CODE(NMV)	DESCRIPTION	CABINET COLOR
26	14300231	---	P3*4/W MC (NI)	---
27	14300201	---	4#-40T*40T*4.8HL*4.0*5-NI/W	---
28	12301011	---	SHIELD, COVER	---



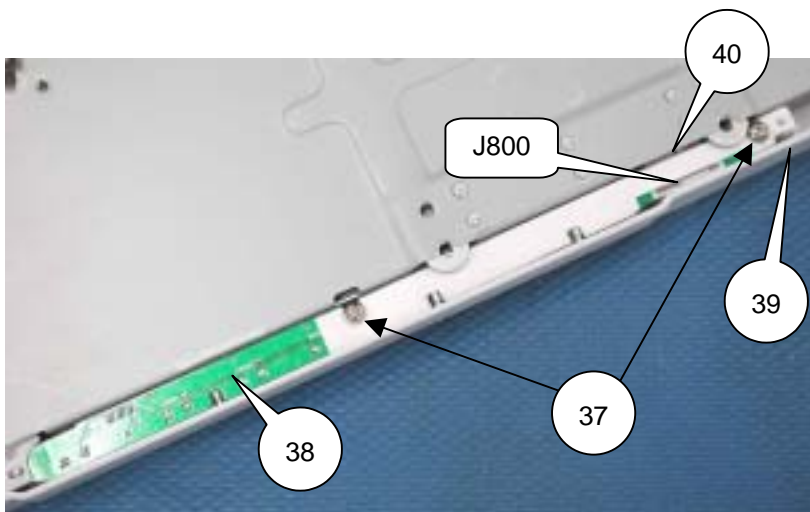
SYMBOL	CODE(NPG)	CODE(NMV)	DESCRIPTION	CABINET COLOR
29	14300321	---	P3*8*8+SPW+WAS MC(NI)	---
30	AM0R39ML	79PQ5202	MAIN INSERT ASSY	---



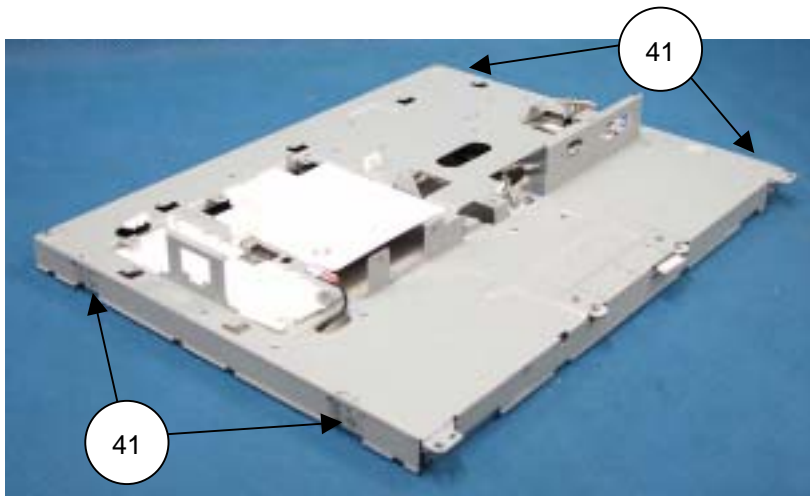
SYMBOL	CODE(NPG)	CODE(NMV)	DESCRIPTION	CABINET COLOR
31	14300181	---	P3*8*8+SPW+GEAR MC(NI)	---
32	14300091	---	F3*8 MC (NI)	---
33	14300301	---	P4*6+SPW+WAS MC(NI)	---
34	AP0R31ML	79PQ5081	POWER INSERT ASSY	---
35	JM100021	79PQ5128	INVERTER BD. T301001.00	---
36	RC900071	79PQ5159	LEAD CONNECTOR ASSY-SW BL	White
36	RC900051	79PQ5160	LEAD CONNECTOR ASSY-SW BK	Black



SYMBOL	CODE(NPG)	CODE(NMV)	DESCRIPTION	CABINET COLOR
37	14000291	---	VB-1 3*10	---
38	AS0R31ML	79PQ5082	SW INSERT ASSY	---
39	10103301	79PQ5171	COVER FRONT ASSY(LCD1560N	White
39	10103291	79PQ5170	COVER FRONT ASSY(LCD1560N	Black
40	RC200181	---	WIRE 12P-12P PITCH 1.25	---



SYMBOL	CODE(NPG)	CODE(NMV)	DESCRIPTION	CABINET COLOR
41	14300211	---	P2.5*4 MC (NI)	---



SYMBOL	CODE(NPG)	CODE(NMV)	DESCRIPTION	CABINET COLOR
42	JG552021	3A684033	TFT LM150X06-A3 LGPL	---
43	RC200191	79PQ5163	WIRE 20P-20P LVDS	---

